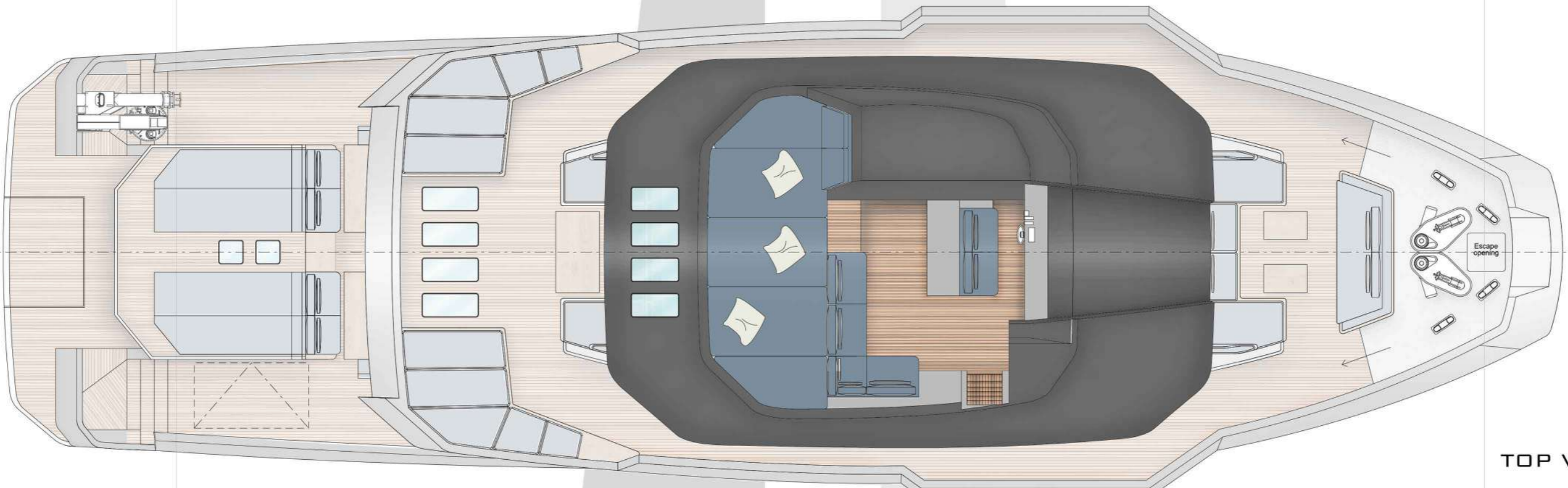
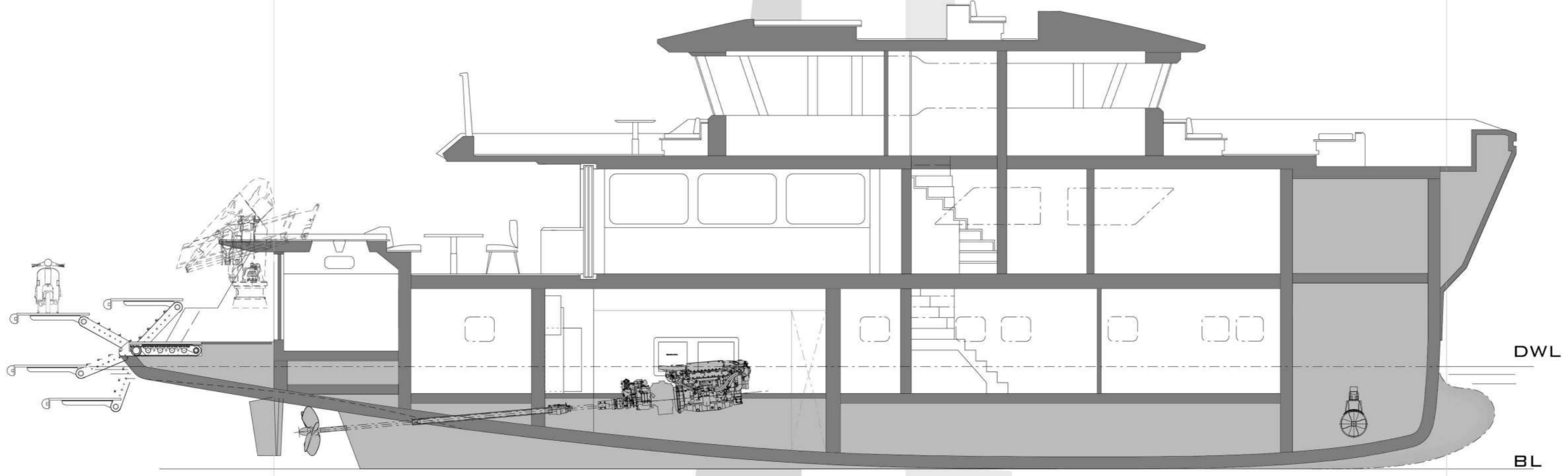
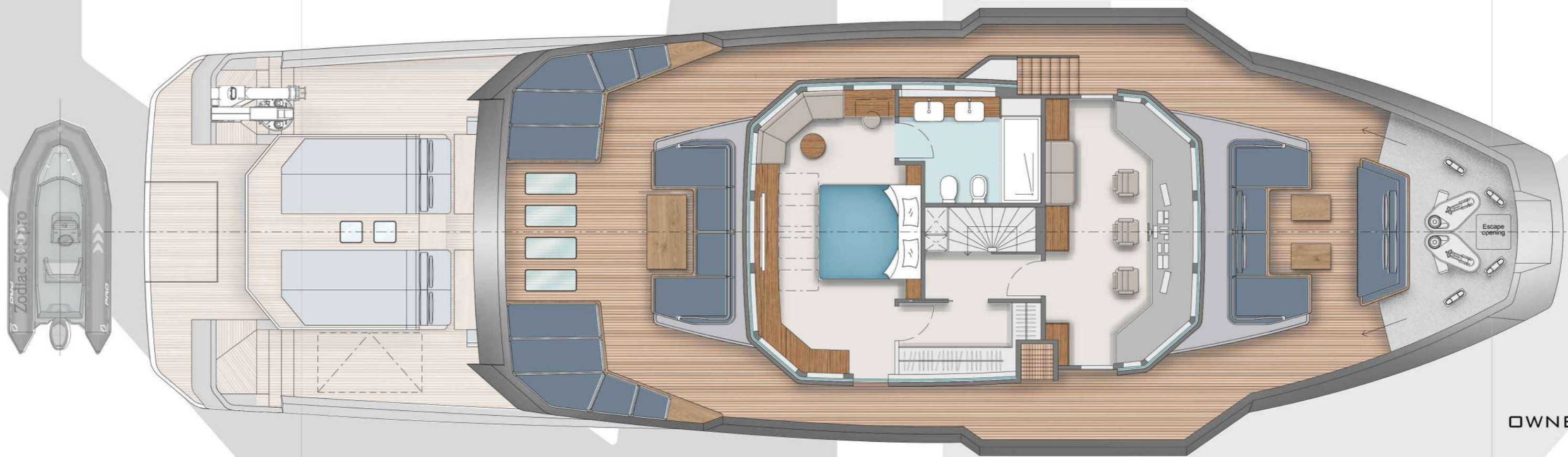


XPD - 88



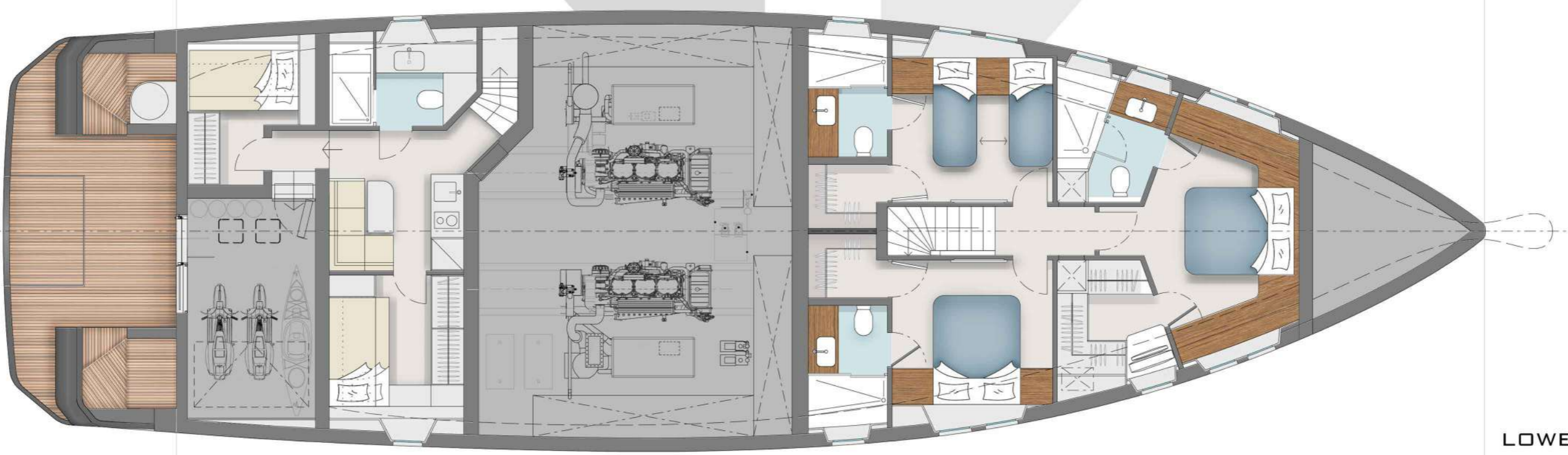
TOP VIEW



OWNER'S DECK



MAIN DECK



LOWER DECK



X P D 8 8

MATERIALI / MATERIALS

Scafo / Hull

Acciaio / Steel

Sovrastuttura / Superstructure

Acciaio / Steel

DIMENSIONI / DIMENSIONS

	METRI / METERS	PIEDI / FEET
Lunghezza fuori tutto / Length overall	28,4	93,17
Lunghezza al galleggiamento / Waterline length	26,65	87,43
Baglio massimo / Max beam	9,00	29,52
Altezza di costruzione / Depth, amidship	4,09	13,42
Pescaggio a pieno carico sotto chiglia / Draught, full load under the keel	2,25	7,38

CAPACITÀ / CAPACITY

	LITRI / LITERS	GALLONI / GALLONS
Gasolio / Diesel oil	32.000	12.152
Acqua dolce / Fresh water	9.300	2.457
Acque nere / Black water	5.800	1.532
Olio pulito - Olio sporco / Clean oil - Dirty oil	25 / 250	7 / 66
Sentina / Bilge	2.200	581

PROPULSIONE / PROPULSION

	KW
Motori / Engines	2x CATERPILLAR C18 357 kW@1800rpm 2xMAN D2676 L471 368 KW@1800rpm
Generatori diesel / Generator	2x CATERPILLAR 45 kW 2x KOLHER 45 KW (50Hz)
Elica di manovra di prua / Bow thruster	37kW Elettrica / 37kW Electrical
Pinne stabilizzatrici / Stabilizer fins	N° 2 CMC Marine 7kW "ZERO SPEED"

PRESTAZIONI / PERFORMANCE

	NODI / KNOTS
Velocità massima / Maximum speed	12
Autonomia / Range	6.000 nm @ 8.5 nodi / 6.000 nm @ 8.5 knots

ALLOGGI / ACCOMODATION

	CABINE / CABINS
Passeggeri / Passengers	8 p - 4 Cabine / 8p - 4 Cabins
Equipaggio / Crew	2+2 p - 2 Cabine / 2+2p - 2 Cabins

SPECIFICATIONS