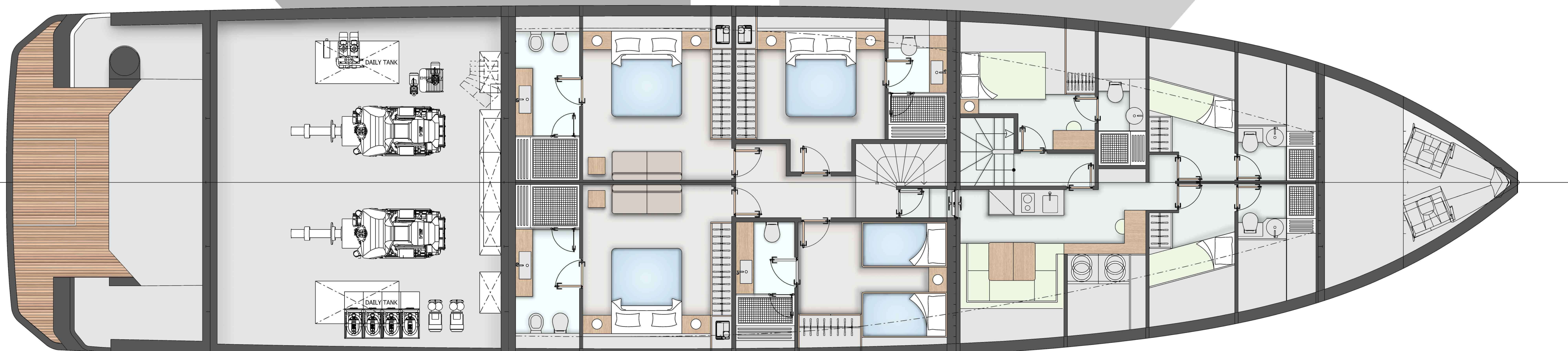
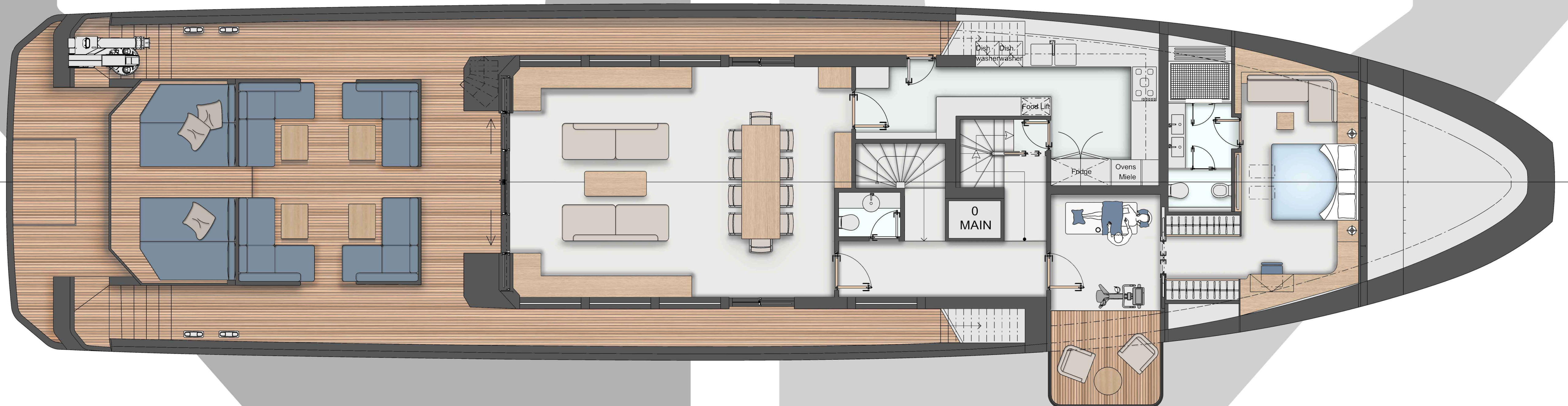
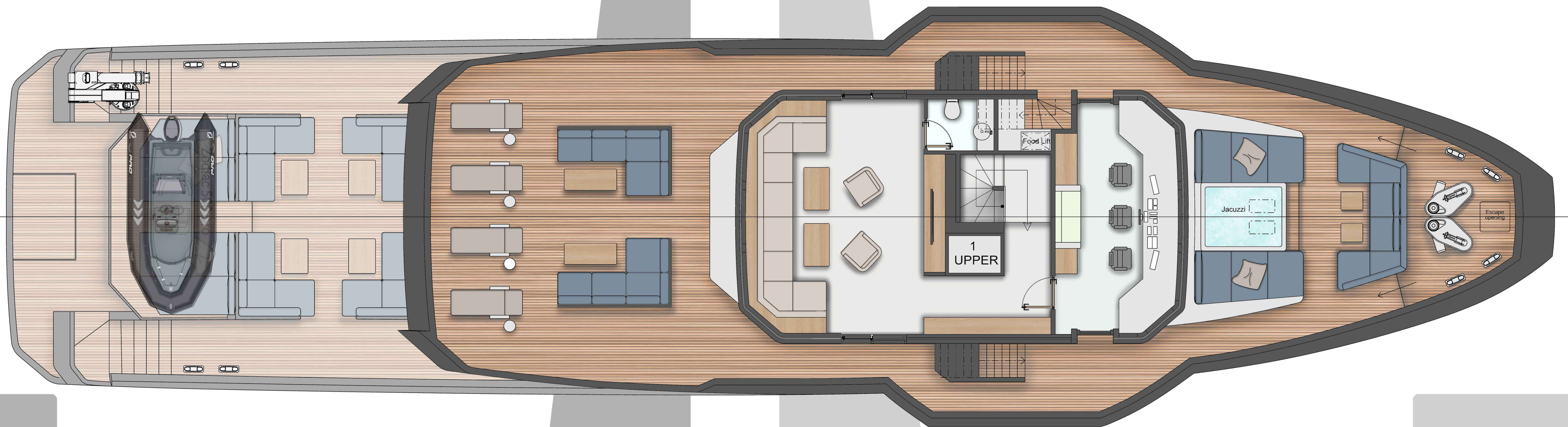
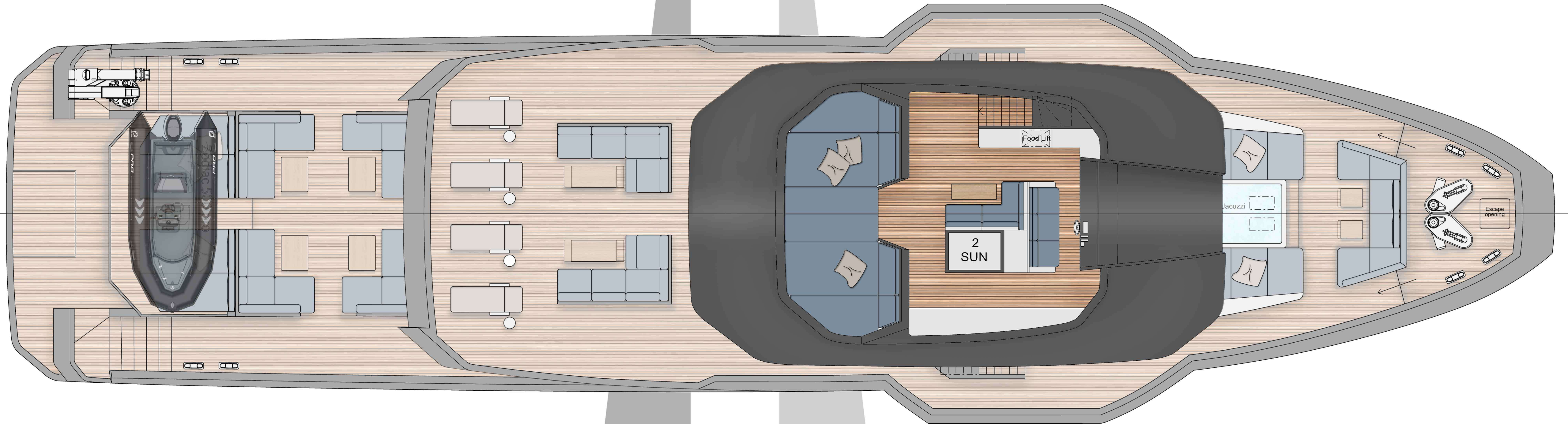
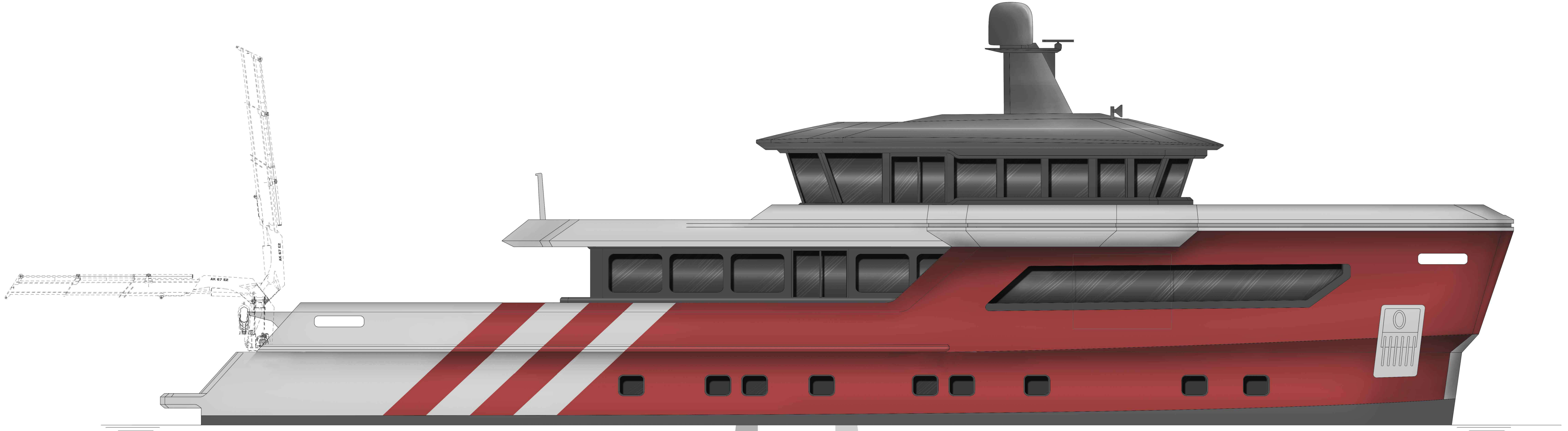


# XPD - 120



X P D 1 2 0

**MATERIALI / MATERIALS**

Scafo / Hull

Acciaio / Steel

Sovruttura / Superstructure

Acciaio / Steel

**DIMENSIONI / DIMENSIONS**

	METRI / METERS	PIEDI / FEET
Lunghezza fuori tutto / Length overall	36,30	119,09
Lunghezza al galleggiamento / Waterline length	33,50	109,90
Baglio massimo / Max beam	9,84	32,28
Altezza di costruzione / Depth, amidship	4,15	13,61
Pescaggio a pieno carico sotto chiglia / Draught, full load under the keel	2,27	7,44

**CAPACITÀ / CAPACITY**

	LITRI / LITERS	GALLONI / GALLONS
Gasolio / Diesel oil	50.000	13.208
Acqua dolce / Fresh water	10.000	2.641
Acque nere / Black water	1.500	396
Olio pulito - Olio sporco / Clean oil - Dirty oil	800	211
Sentina / Bilge	2.000	528

**PROPULSIONE / PROPULSION**

	KW
Motori / Engines	2 x MAN D2868 LE 431 - 500 kW@1800rpm
Generatori diesel / Generator	2 x Kohler 70 kW
Elica di manovra di prua / Bow thruster	50 kW Elettrica / 50 kW Electrical
Pinne stabilizzatrici / Stabilizer fins	N° 2 CMC Marine 7kW "ZERO SPEED"

**PRESTAZIONI / PERFORMANCE**

	NODI / KNOTS
Velocità massima / Maximum speed	14
Autonomia / Range	4.700 nm @ 10 nodi / 4.700 nm @ 10 knots

**ALLOGGI / ACCOMODATION**

	CABINE / CABINS
Passeggeri / Passengers	10p - 5 Cabine / 10p - 5 Cabins
Equipaggio / Crew	4+1 p - 3 Cabine / 4+1p - 3 Cabins

SPECIFICATIONS